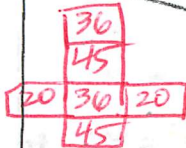
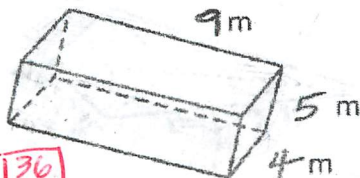
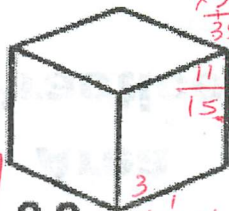


1 SA = 202 m<sup>2</sup>



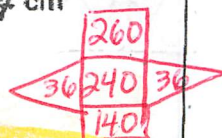
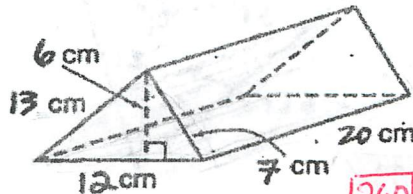
$$\begin{aligned} 2(36) &= 72 \\ 2(45) &= 90 \\ 2(20) &= 40 \\ \hline &202 \end{aligned}$$

2 SA = 91.26 u<sup>2</sup>

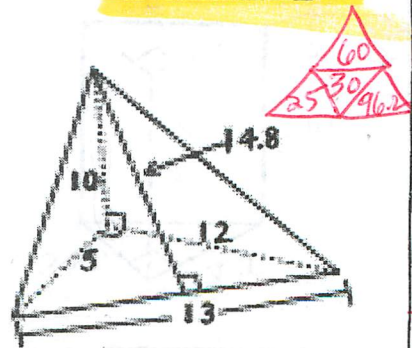


$$\begin{array}{r} 8 \\ 3.9 \\ \times 3.9 \\ \hline 351 \\ 1170 \\ \hline 15.21 \\ \times 6 \\ \hline 91.26 \end{array}$$

3 SA = 712 cm<sup>2</sup>

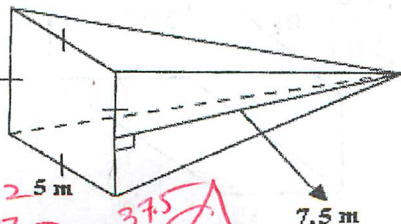


5 SA = 211.2 u<sup>2</sup>



$$\begin{array}{r} 12 \\ 14.8 \\ \times 13 \\ \hline 444 \\ 1480 \\ \hline 1924 \\ \quad 96.2 \\ \hline 21192.4 \\ \quad -18 \\ \hline 21174 \end{array}$$

4 SA = 100 m<sup>2</sup>



$$\begin{array}{r} 7.5 \\ \times 1.5 \\ \hline 37.5 \\ \times 2 \\ \hline 75.0 \end{array}$$



## Surface Area Practice

### Set D